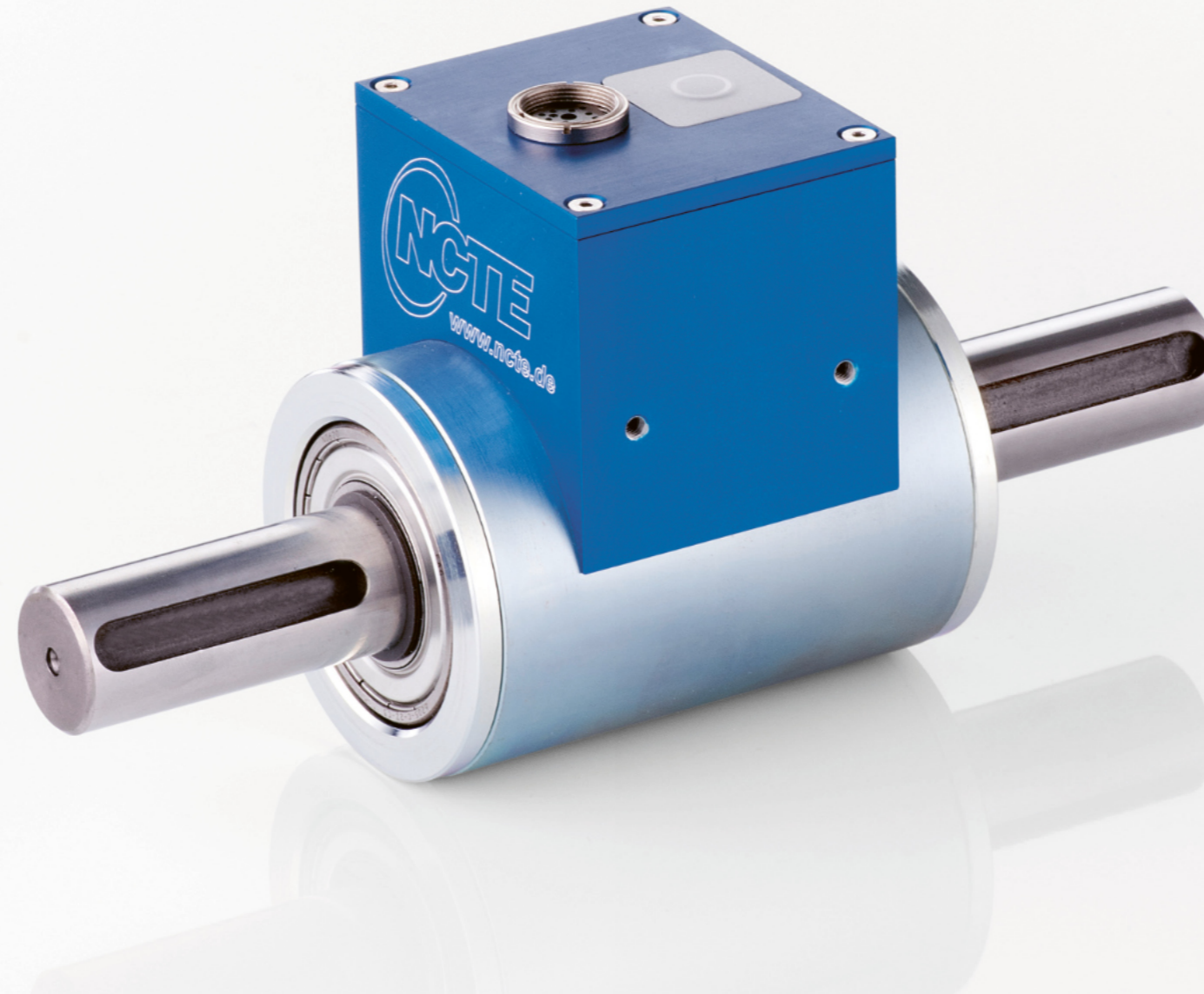


TORQUE  
SENSORS

## WE MAKE MACHINES AND PRODUCTS SUSTAINABLY SMARTER

We enthusiastically develop, produce and sell sensors that precisely measure torque, force, shear and bending.

Whether customised individual solutions or series products „Made in Germany“, with our sensor solutions our customers leverage new potentials of their machines and products.



As a pioneer in the field of non-contact torque measurement, we are driven by constant innovation.

Our magnetoelastic technology is robust and works under extreme environmental conditions. This allows us to reliably deliver data in real time where no one else can measure.



## WE PROVIDE DATA WHERE NO ONE ELSE CAN MEASURE

- Force, torque, speed, frequency, force distribution (symmetry), maximum loads, absolute position measurement
- High data rate in real time



FORCE

BEND

TORQUE

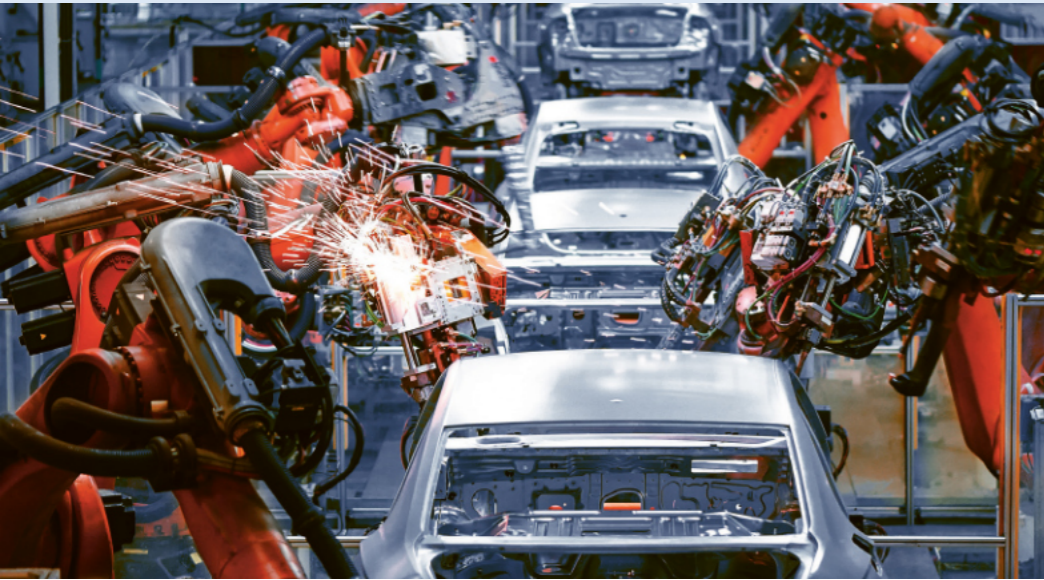
SPEED

FREQUENCY

POSITION



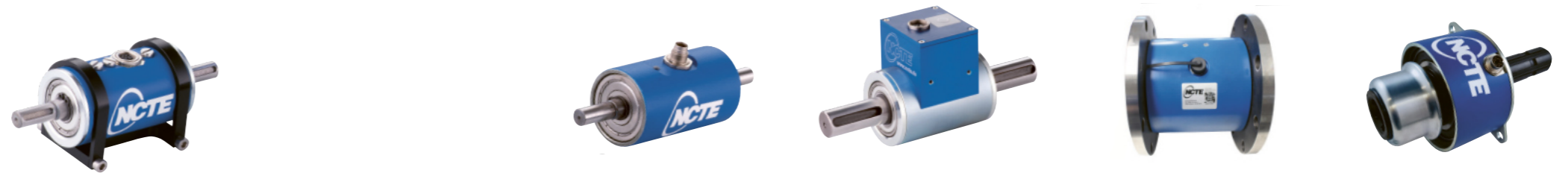
Download in App

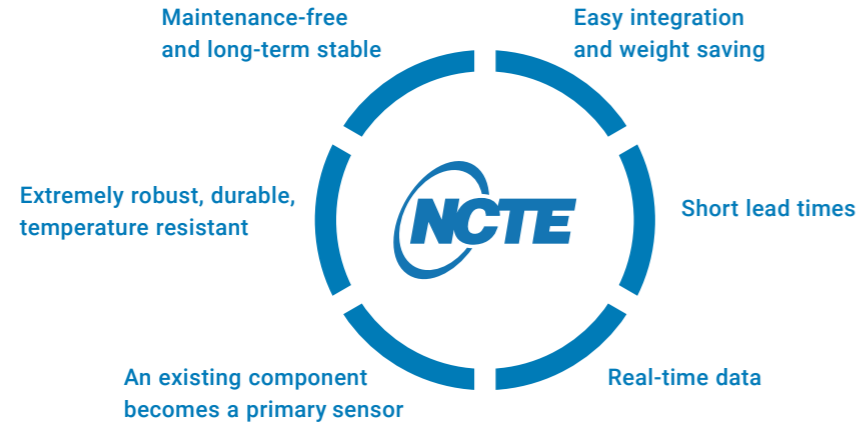


## WE MAKE MACHINES INTELLIGENT (IoT)

At the beginning of the Internet of Things, there is always a sensor. Only with a sensor, a machine can detect its status and perform controlled actions. With the connection to the internet, things become "intelligent".

Our sensor detects the torque of machines "contactless", reliable and in real time.





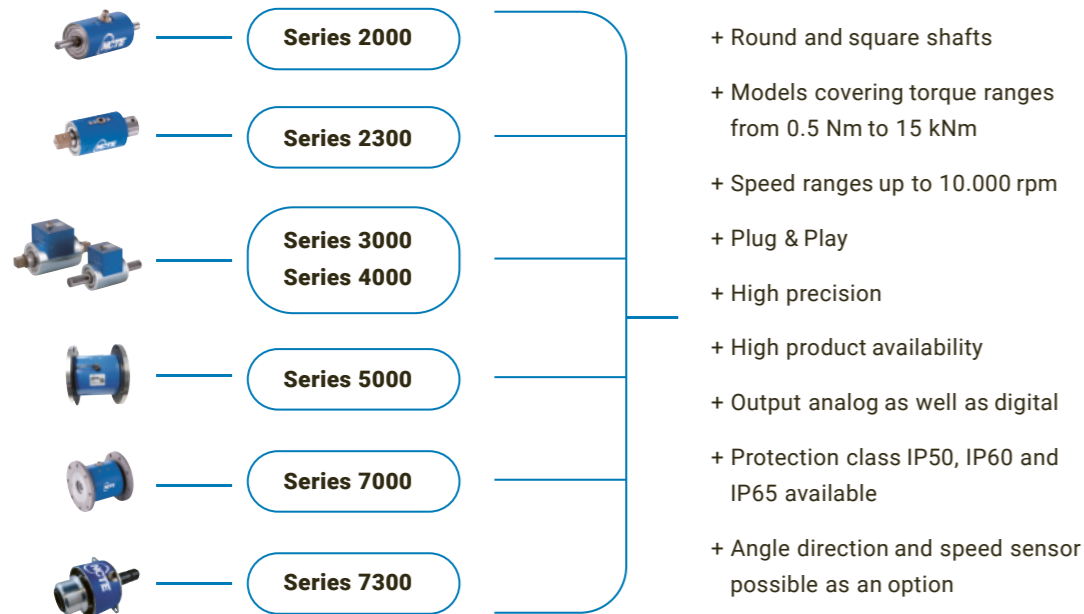
## INVERSE MAGNETOSTRICTION

Methodology to measure contactless

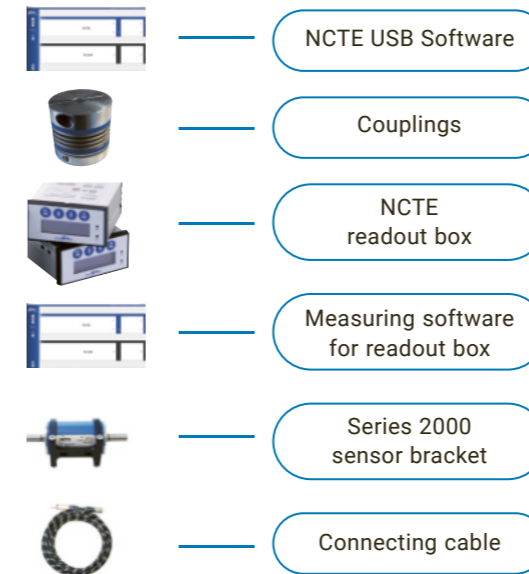
KEY HIGHLIGHTS:

- + Long time stable
- + Maintenance free
- + Contactless measurement
- + Very reliable under extreme conditions

## SENSORS & ACCESSORIES



## AVAILABLE SERVICES & SUPPORT



### Services

- + Calibration
- + Integrated Solutions (OEM sensor integration)











### Downloads

- + CAD models/ drawings
- + Instruction manual and product data sheets
- + Calibration certificates

### Support

- + Technical support
- + Technical service
- + Product training
- + Marketing materials
- + Safety data sheet



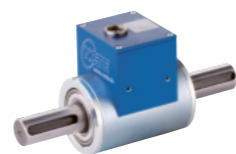
MODEL	SHAFT TYPE	PRODUCT	ACCURACY (%)	0-5 V	0-10 V	±5 V	±10 V	4-20 mA	CAN-Bus	USB	IP50	IP65	Angle Sensor	Speed Sensor	
S2100	square		≤± 1	✓	✓	✓	✓				✓				≤1.000
S2200	round		≤± 1	✓	✓	✓	✓				✓				≤5.000
S2300	round		≤± 0.5		✓			✓	✓	✓	✓		✓		≤10.000
S3000	square		≤± 0.2		✓			✓			✓		✓		≤10.000
S3000	round		≤± 0.2		✓			✓			✓		✓		≤10.000
S4000	square		≤± 0.1		✓			✓			✓		✓		≤10.000
S4000	round		≤± 0.1		✓			✓			✓		✓		≤10.000
S5000	flange		≤± 0.5		✓			✓			✓	✓			≤2.500
S7000	flange		≤± 0.5		✓			✓	✓	✓	✓	✓	✓	✓	≤3.600
S7300	6 teeth		≤± 0.5		✓			✓	✓	✓		✓		✓	≤1.200
<b>OUTPUT</b>											<b>PROTECTION CLASS</b>		<b>OPTIONAL</b>		<b>SPEED [rpm]</b>



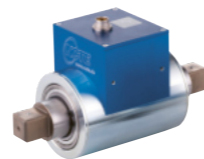
■ Series 2000



■ Series 2300



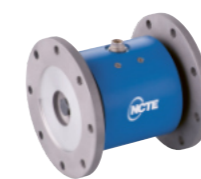
■ Series 3000



■ Series 4000



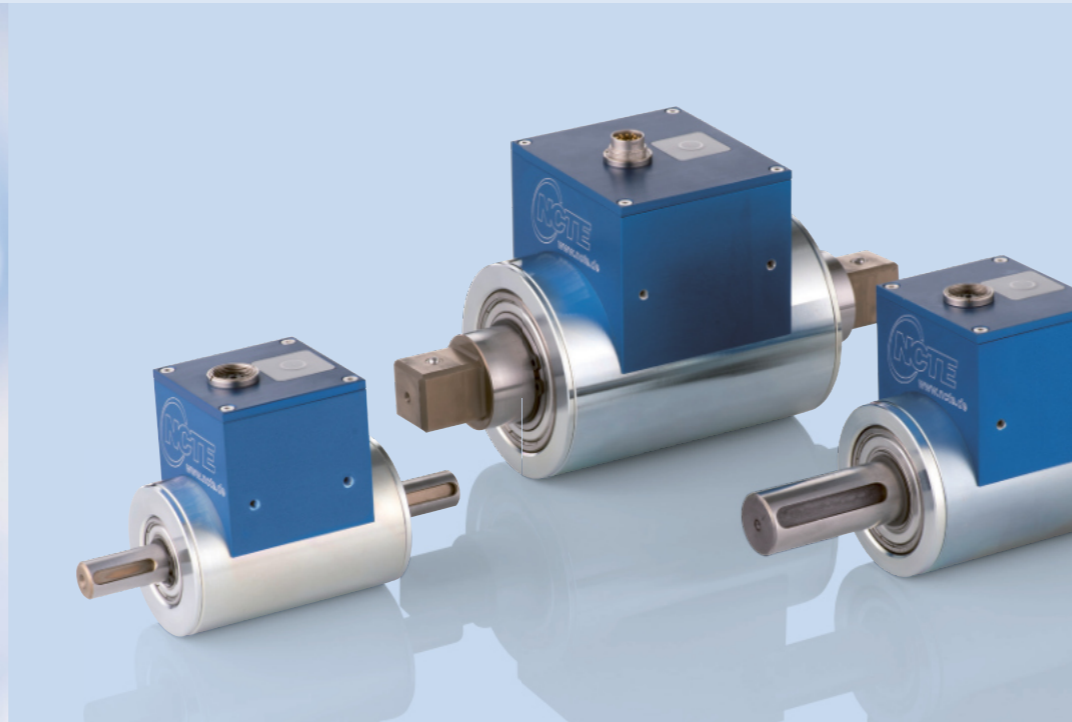
■ Series 5000



■ Series 7000



■ Series 7300



## NON-CONTACT TORQUE EXPERTS

NCTE has been developing non-contact measurement technology since 2002 and has grown from a start-up to a technology company with series production for well-known customers. Our sensors are used in a large number of smart products – from e-bikes to motorsports and agriculture to industrial applications and engine tests.

The product portfolio offers a wide range of series models, but also tailor-made products for customer-specific solution. With around 40 employees the company produces at the Oberhaching site near Munich cutting-edge technology Made in Germany and delivers it all over the world.

# TORQUE SENSORS

INNOVATIVE  
TECHNOLOGY –  
INVERSE  
MAGNETOSTRICTION

Ihr Ansprechpartner in Österreich:



messwert - messtechnische Lösungen e.U.  
Anton-Falch-Strasse 2, 6063 Rum

☎ +43-664-4981600  
✉ info@messwert.at  
🏠 www.messwert.at



[WWW.NCTE.DE](http://WWW.NCTE.DE)

NCTE AG — [sales@ncte.de](mailto:sales@ncte.de), Telefon +49 89 6656190  
Raiffeisenallee 3, 82041 Oberhaching, Germany

